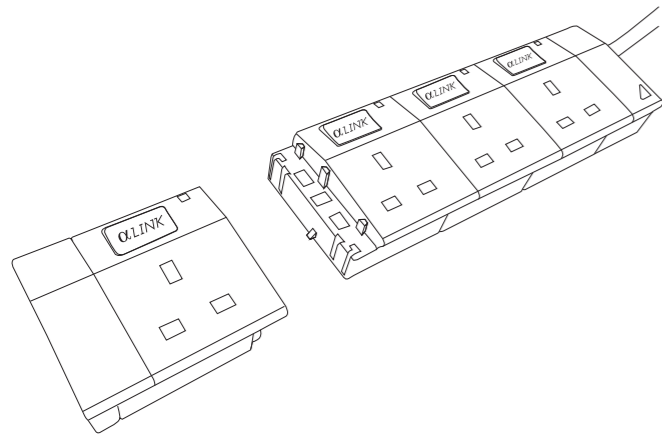


## Link Socket User Manual (EN)



Thank you very much for choosing our products.  
Our products will bring the most comfort and convenience to you. To ensure you can use our products accurately and safely, please read the user manual in details.

### 1 PRODUCT FEATURES

- Allows users to add or reduce the number of sockets according to their actual needs (can be connected up to 10 gang socket-outlet only)
- High compatibility – can be connected with peripheral products
- Full utility rate with high price / performance ratio
- 100% eco-friendly and ergonomics design
- Individual switch (only for specific model)
- Novel neon indicator
- Safety shutter
- Made by superb heat-resistant and unbreakable thermoplastic

### 2 TECHNICAL SPECIFICATION

Complied with International Safety Standard: BS1363/A, BS5733/A, MS589/A, SS145/A, IEC60884-1, IEC60884-2-5, RoHS

Rated Voltage: 250V AC50Hz  
Rated Current: 13A maximum  
Power Indicator: Neon  
Rated Power: 3,250 Watts maximum  
Plug: BS1363/A Fused Plug  
Cable: BSEN50525-2-11, 1.25mm<sup>2</sup> x 3 core

### 4 SAFETY PRECAUTIONS

Please observe the following warnings and cautions to avoid personal injury or other damage.

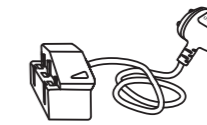
- Must disconnect from the power mains and beware of taggers fixed to both sides of the socket before connection or disconnection. Improper use may cause damage to the product, injury and property damage.
- Always push the plug all the way into the power outlet to avoid electric shock.
- User must hold both sides of the plug firmly when removing the plug from power mains. Never attempt to pluck the power cord as this may result in damage or injury.
- Do not squeeze or beat the product.
- Stop using the product if there is any abnormal phenomenon such as overheating, deformation, spark, poor contact etc.
- Never damage, pluck, excessively bend or place heavy objects on the power cord.
- Never attempt to touch the socket, plug or switch when your hands are wet.
- Dust stick on socket surface may get wet in humid environment. Please wipe the socket with a dry cloth occasionally after disconnecting from the power mains.
- The product is for indoor use only.
- Do not use the product in damp environment.
- Disconnect from the power mains and store it in a cool, dry and well-ventilated location if the product will not be used for a long period of time.
- The product has been tested up to 10 gang socket-outlet. It can be connected to a maximum of 10 gang socket-outlet including other accessories.
- Ensure the rated voltage and current must not exceed the maximum load when connecting to a couple of Link Sockets. Please use individual socket for high-power electrical appliance.
- Please consult a qualified electrician or contact us for assistance if necessary.
- Alphalink (HK) Limited (the Company) shall not be liable for any damages or other loss whatsoever incurred by you arising from or in relation to your misuse, negligence, accident and/or natural calamities.

### 3 INSTRUCTION

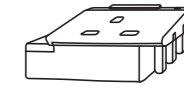
#### Components

Link Socket BS consists of 3 main components:

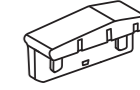
- BS Type I: power cord with fused plug
- BS Type II: extendable socket
- BS Type III: safety end-cover



BS Type I:  
power cord with fused plug



BS Type II:  
extendable socket



BS Type III:  
safety end-cover

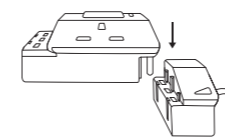
#### Connection

- Must disconnect from the power mains before connection.

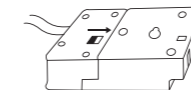


- Place BS Type I on a flat surface.

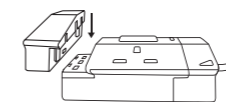
- Make sure the coulisse of BS Type I and BS Type II are in alignment. Gently push BS Type II all the way into the left holes of BS Type I.



- The Link Socket bottom clasp will then be locked automatically if the connection is successful.



- Plug in BS Type III into BS Type II for protection.



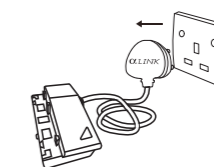
- Make sure BS Type I, II & III are stitched to each other firmly before connecting to the power mains.

- Switch on Link Socket. The device is ready to be used if the power indicator is on.

\* Follow the foregoing steps if more than one unit of BS Type II / other modules are needed.

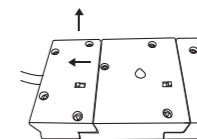
#### Disconnection

- Must disconnect from the power mains before disconnection.

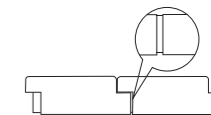


- Place Link Socket on a flat surface.

- Unlock the Link Socket bottom clasp and then pull up the last BS Type II/III vertically one by one.



- Keep all components in a cool and dry area for future use.



\* The metal parts locate in-between Link Sockets are an earthing system and can be seen after connection. Please be noticed that it is normal and safe to use.

\* Note: Figures are for reference only. Different models may have different housings but the connection and disconnection principle should be the same.

#### Warranty Card

Date of Purchase:		Retailer:	
Contact Person:		Contact Number:	
Address:			
Product:		Model:	
Pick-up Option:	<input type="checkbox"/> Pick-up by myself <input type="checkbox"/> By Mail (Postage is at customer's own cost)		
Remarks:			

### CUSTOMER SERVICES

In order to enhance the quality of our products and services, ALINK would like to hear your valuable comments and suggestions. If you have any queries, comments or concerns about our products or services, you are welcome to contact our customer service centre. We will try our best to provide adequate and clear instructions.

#### Hong Kong Headquarters

Flat A, 17/F., Roxy Industrial Centre, 58-66 Tai Lin Pai Road, Kwai Chung, N.T., Hong Kong  
Phone: (852) 3113 5811  
Fax: (852) 2494 7251  
Email: info@AlphaLink.hk

#### Opening hours:

Mondays to Fridays  
9:00am – 12:30pm / 2:00pm – 6:00pm  
(HKT / GMT +8)  
Saturday  
9:00am – 12:30pm  
(HKT / GMT +8)  
Closed on Sundays and public holidays

Product warranty registration:



<http://alphalink.hk/web/register.php>

### 5 REFERENCE FOR RATED VOLTAGE INDEX

The following rated voltage index is for reference only. The figures shown below may not be the same as your electrical appliances. For proper use of the product, please refer to your electrical appliance user manual or consult the dealer.

2 HP Window Air-Conditioner	~ 8.4 amp = 1,850w
Heater	~ 8.2 amp = 1,800w
Hair Dryer	~ 4.5 amp = 1,000w
Medium-sized Rice Cooker	~ 3.6 amp = 800w
Iron	~ 3.4 amp = 750w
Computer	~ 1.4 amp = 300w
Television Set 25"	~ 0.7 amp = 140w
Fan 15"	~ 0.4 amp = 75w
1.2m T8 LED Fluorescent Tube	~ 0.07 amp = 16w

### 6 TROUBLESHOOTING

Problem	Possible Cause	Measures
The indicator is on but the connected appliance is not functioning.	The appliance may not be connected to the socket properly. The appliance maybe malfunctions.	Connect the appliance to the socket properly. Consult with the appliance supplier.
The indicator is off but the connected appliance is functioning.	The indicator may have normal wear and tear problem.	Entitle to free replacement of parts under normal use and within the warranty period.
The connected appliance ceases operation suddenly.	Interruption to power supply.	Consult with power supply service provider.
	The connected appliance may have damaged.	Consult with the appliance supplier.
	Fuse maybe damaged.	Replace a fuse with correct rating and type.
	Loss of main power supply.	Check the maximum approved loading. Check if there is any electric leakage or short circuit with qualified electrical technician.

### 7 PRODUCT WARRANTY POLICY

ALINK is devoted to provide customers with quality products and services. Please read carefully the following terms and procedures for warranty and repair services, in which would be binding to customers.

#### (A) Warranty Terms

- The Warranty will only be valid if customer registers the product warranty on our Website ([www.AlphaLink.hk](http://www.AlphaLink.hk)) or mail the completed Warranty Card within 14 days from the date of purchase.
- The warranty is effective within 12 months from the date of purchase.
- Customer successfully registered the product warranty online within 14 days from the date of purchase will be rewarded an extended Warranty of 3 months.
- Customer needs to provide product warranty registration email issued by us or Warranty Card with dealer's chop and date of purchase and with the original purchase receipt presented when service is rendered.

#### (B) Warranty and Repair Procedure

- Customer should provide clear and concise information in the Warranty Card.
- Warranty and repair services are available at the Company if customer brings the faulty product in person, together with a valid proof of purchase and Warranty Card or product warranty registration email issued by us.
- Clients can also opt to pose the faulty product with valid proof of purchase and the Warranty Card or product warranty registration email to the Company. Please notice that postage is at customer's own cost and we shall not be liable for any damage or loss caused by the postal services.
- We will inform customer that the repaired product is ready for collection once it is completed; or post it to customer as requested. Please notice that postage is at customer's own cost and we shall not be liable for any damage or loss caused by the postal services.

If the product warranty registration is successfully done online, customer will receive a product warranty registration email for record. If you do not receive such email notification with 14 days after registration, please contact us during office hours or e-mail us at [cs@AlphaLink.hk](mailto:cs@AlphaLink.hk) for enquiry.

All information being disclosed to us by the Client is strictly confidential, and all information is just for record and provides warranty or other services only.